

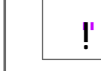


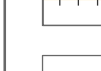
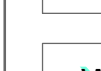
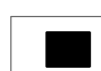




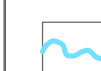


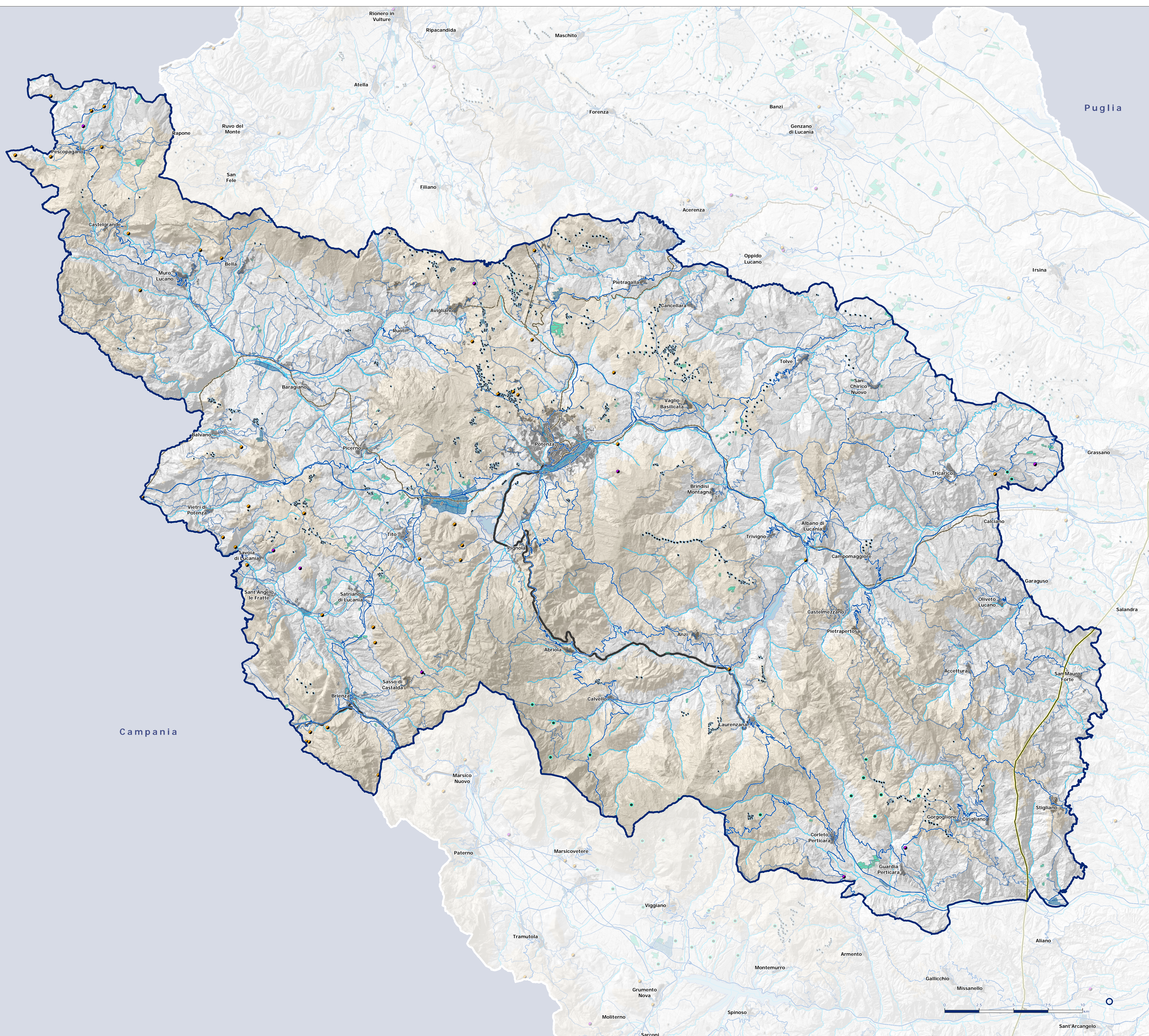


**AREE PRODUTTIVE, RETI INFRASTRUTTURALI ED ENERGETICHE**

-  Piattaforme ed aree produttive
-  Aree estrattive inerti
-  Discariche
-  Viabilità principale
-  Viabilità minore
-  Rete ferroviaria
-  Principali linee elettriche ad alta tensione
-  Stazioni Elettriche
-  Pozzi per estrazione di idrocarburi
-  FER - impianti eolici in esercizio e/o autorizzati
-  FER - impianti fotovoltaici in esercizio e/o autorizzati
-  Antenne, ripetitori, sostegni rete elettrica

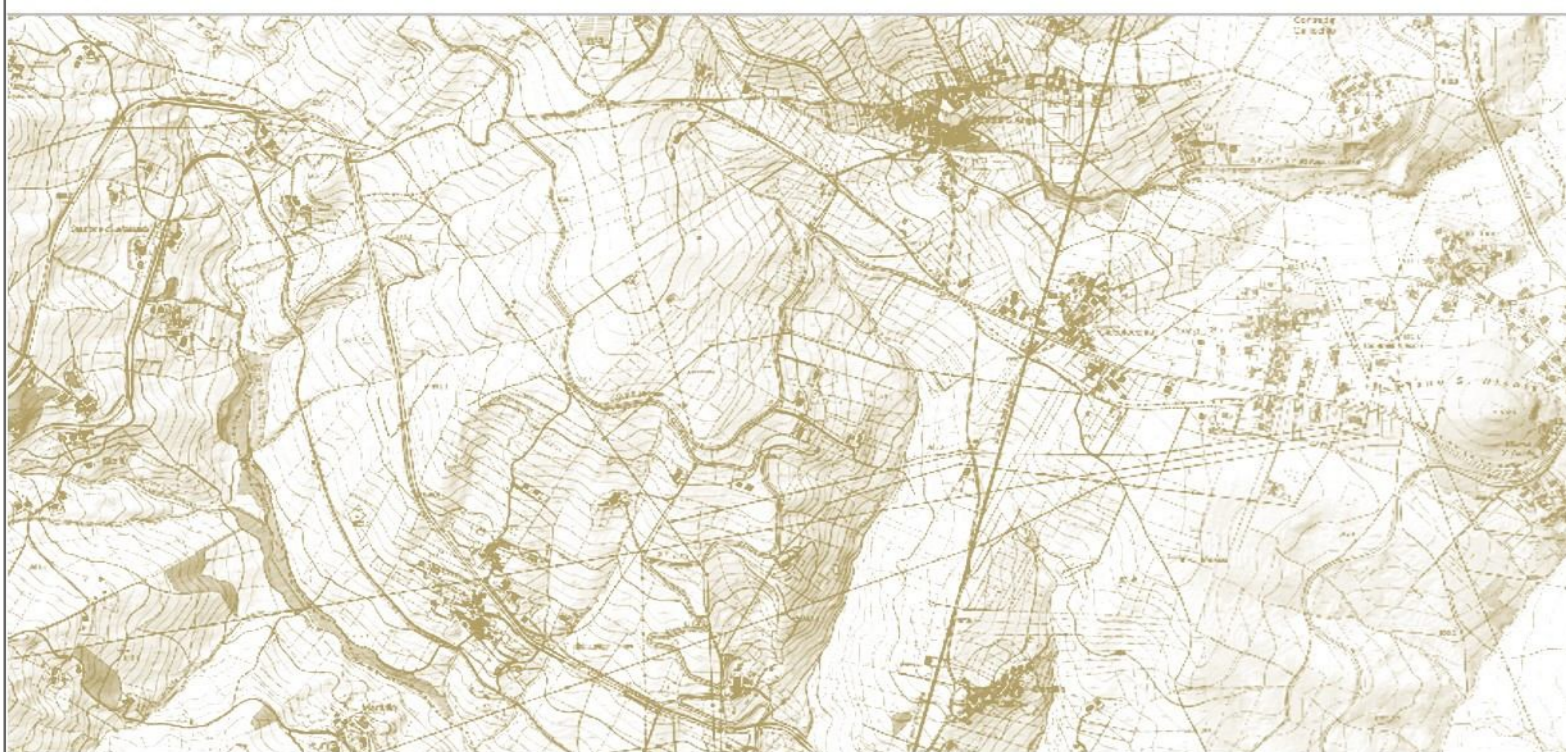
-  fiumi, torrenti e corsi d'acqua
-  specchi d'acqua
-  insediamenti



Regione Basilicata - Direzione Generale dell'Ambiente, del Territorio e dell'Energia

**Piano Paesaggistico Regionale**

[art. 143 D.Lgs. n. 42/2004 - art. 12 bis LUR]



ELABORATO N. 4.4.4.B

TITOLO CARTA DELLE AREE PRODUTTIVE, RETI INFRASTRUTTURALI ED ENERGETICHE - AMBITO B

scala 1:90.000 data GIUGNO 2023

Responsabile del Procedimento  
Direttore Generale - Ing. R. Tricomi

Coordinatore Tecnico  
Direzione Generale - Arch. A. Abate



EDITING GRAFICO E CARTOGRAFICO A CURA DEL GRUPPO TECNICO REGIONALE - DIREZIONE GENERALE

